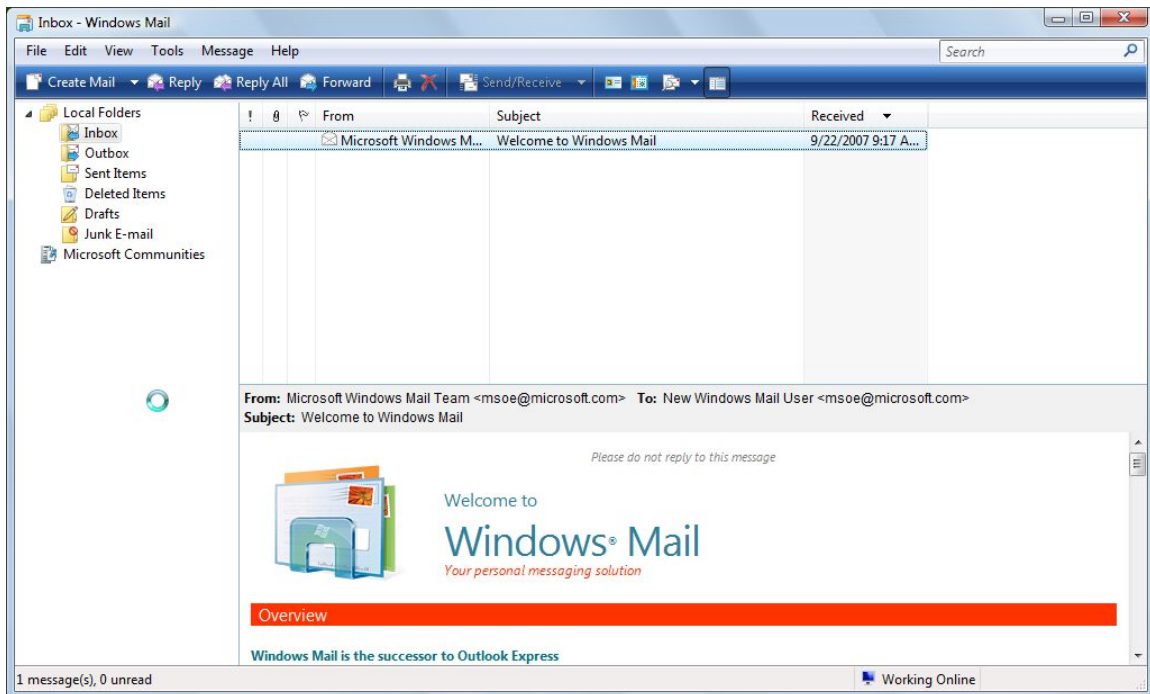


We have upgraded our servers and need to make 2 changes:

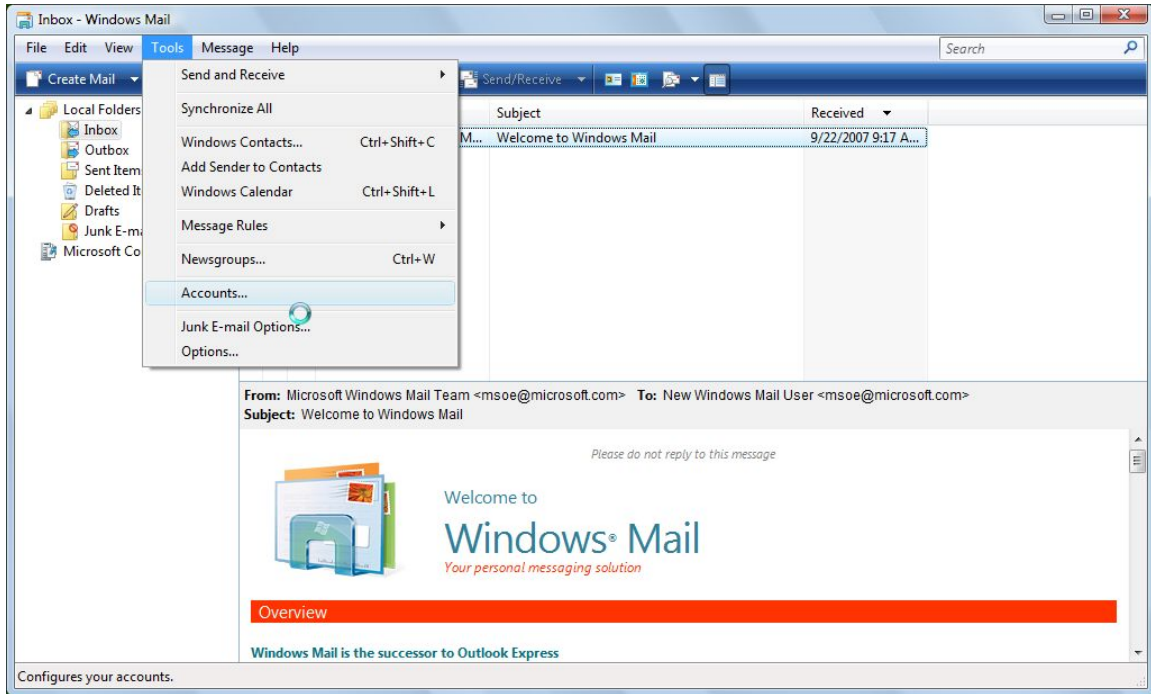
1. Add @comsouth.net to your Account Name
2. Check the box “My outgoing Server requires authentication”

The reasons for these changes are many. In our fight to curb spam we are now requiring a password to send an E-Mail out. This should slow down viruses and outsiders from our network to be able to send spam through our servers. This will also keep us off blacklists. These lists are created by good intending sites that are also in a war against spam. However they blacklist companies simply if you do not authenticate your outgoing mail. Many ISP's use these blacklists and it disrupts the flow of good e-mail when you get on these lists. We are also offering larger mailboxes to accommodate more and larger e-mail. The separate Postini spam filtering will be incorporated to a GreyMail filtering. This will also offer real-time Virus protection. This does not mean you do not need protection on your PC, it only means one more level of protection. Personal Web Space and N Drive are also two new added value features.

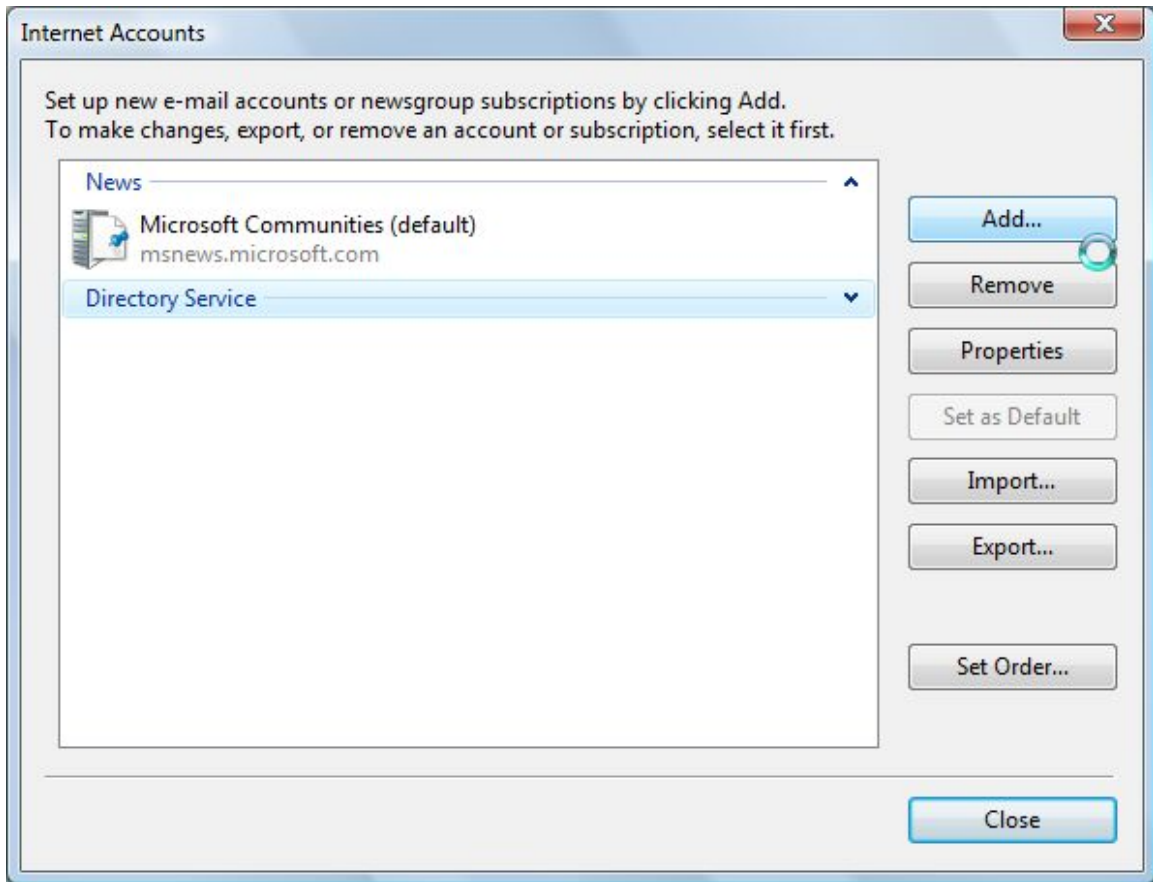
The steps below are screen shots while setting up @comsouth.net E-Mail settings for Windows Mail used on Vista



Click on Tools

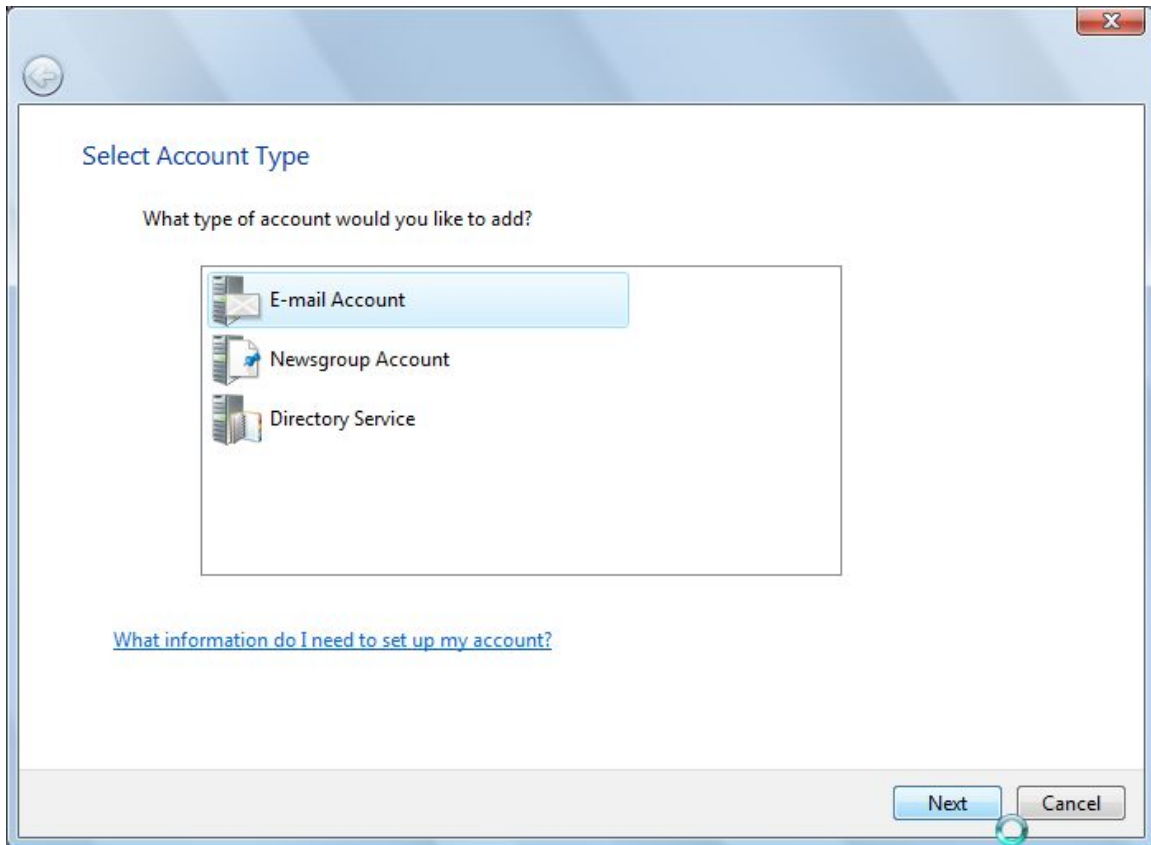


Click on Accounts



If you do not have E-mail setup click on Add.

If you have an E-Mail account setup click on properties and forward along past finish.



Click on E-Mail account and next

Your Name

When you send e-mail, your name will appear in the From field of the outgoing message.
Type your name as you would like it to appear.

Display name:

For example: John Smith

[Where can I find my e-mail account information?](#)

Next Cancel

Type in your name as it will be seen in E-mail and then next

Internet E-mail Address

Your e-mail address is the address other people use to send e-mail messages to you.

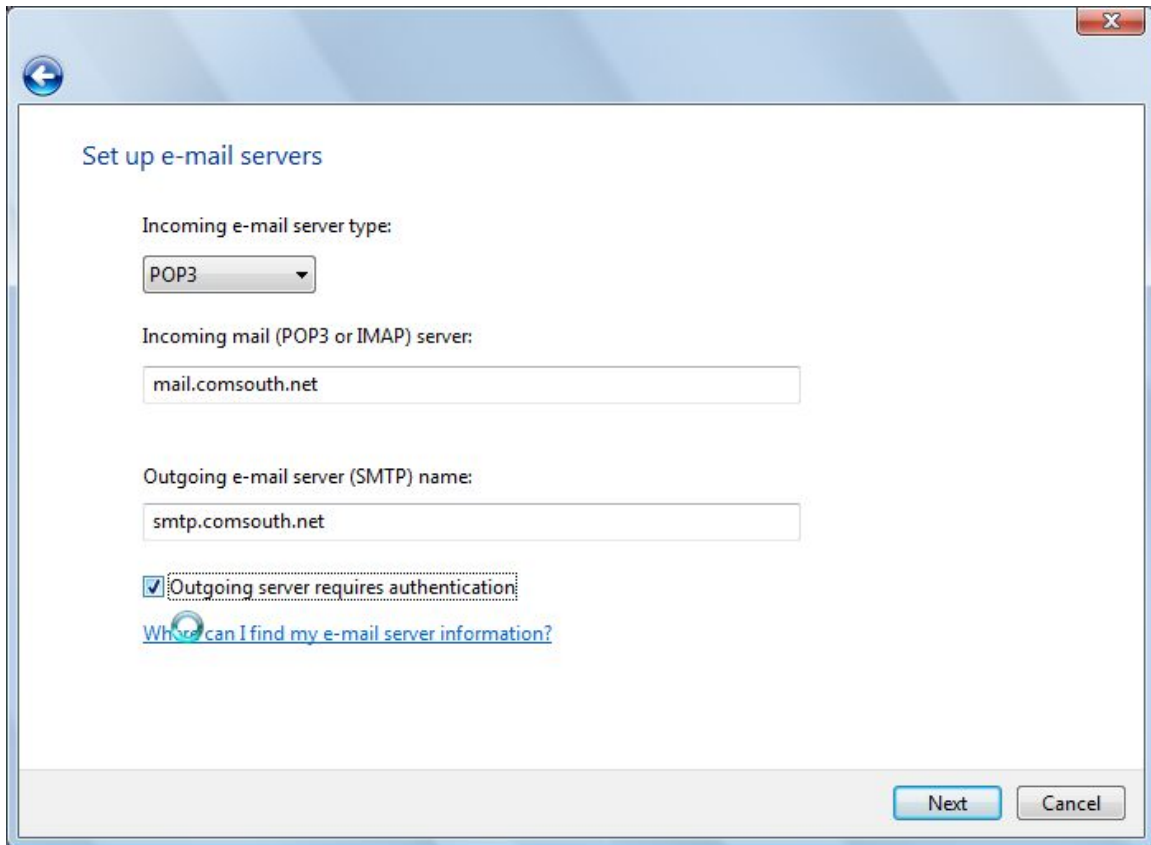
E-mail address:

For example: someone@microsoft.com

[Where can I find my e-mail account information?](#)

Next Cancel

Type in your account name @comsouth.net and click next



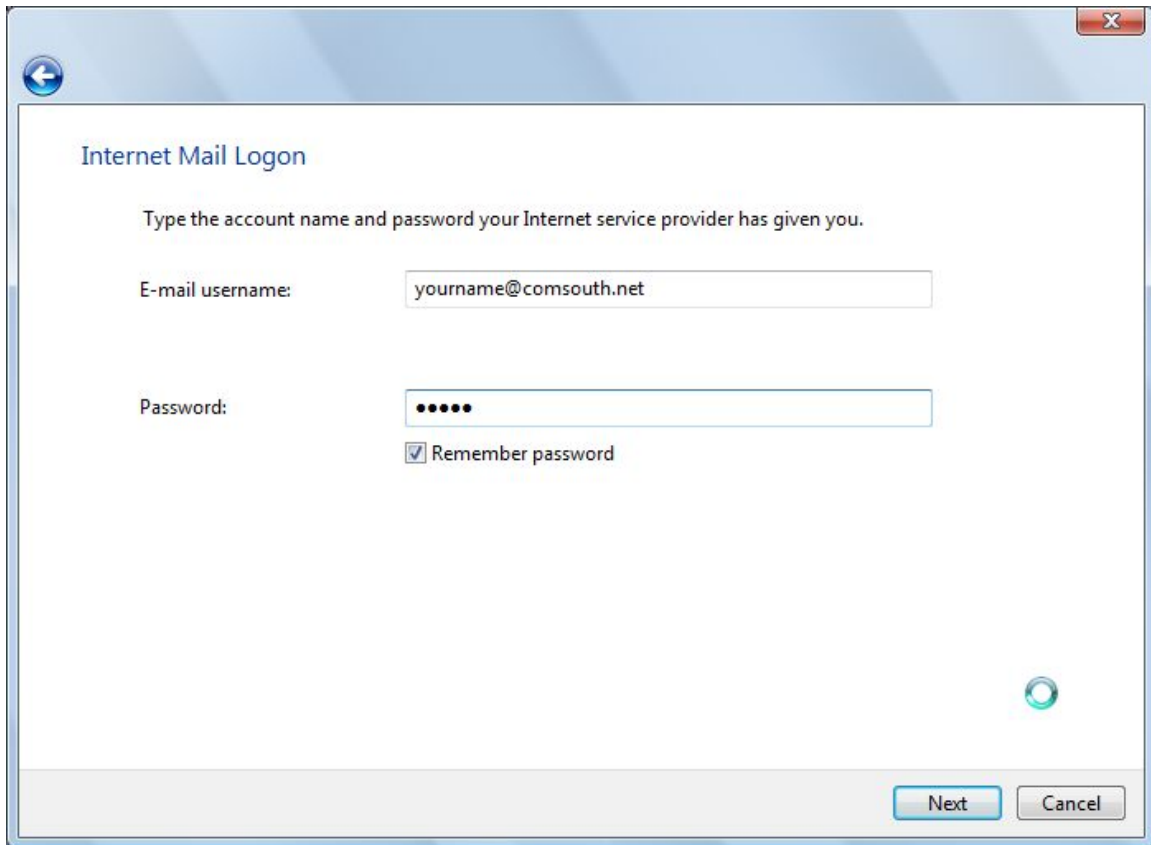
Type of server is POP3

Mail Servers are:

Incoming (POP3) : mail.comsouth.net

Outgoing (SMTP) : smtp.comsouth.net

Check the box “Outgoing server requires authentication” and click next

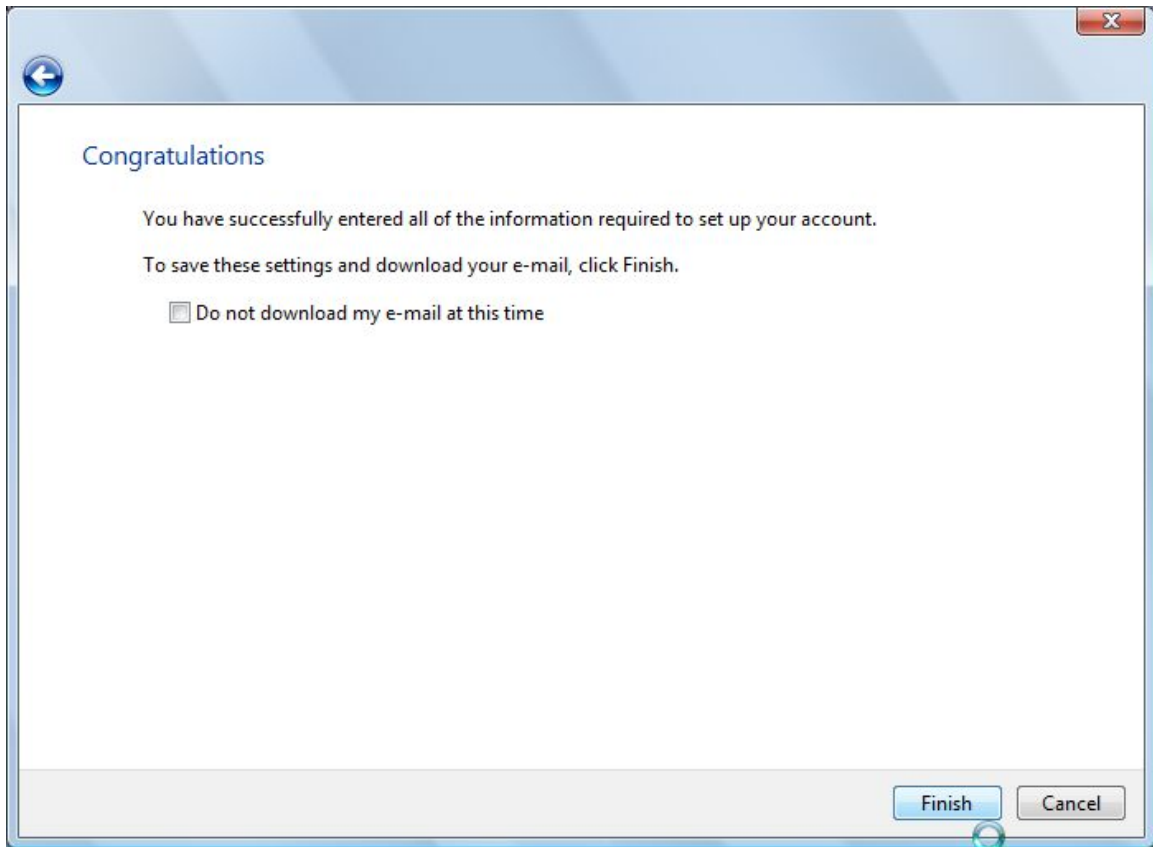


The image shows a Windows-style dialog box titled "Internet Mail Logon". It has a blue header bar with a back arrow icon on the left and a close button (X) on the right. The main content area is white and contains the following elements:

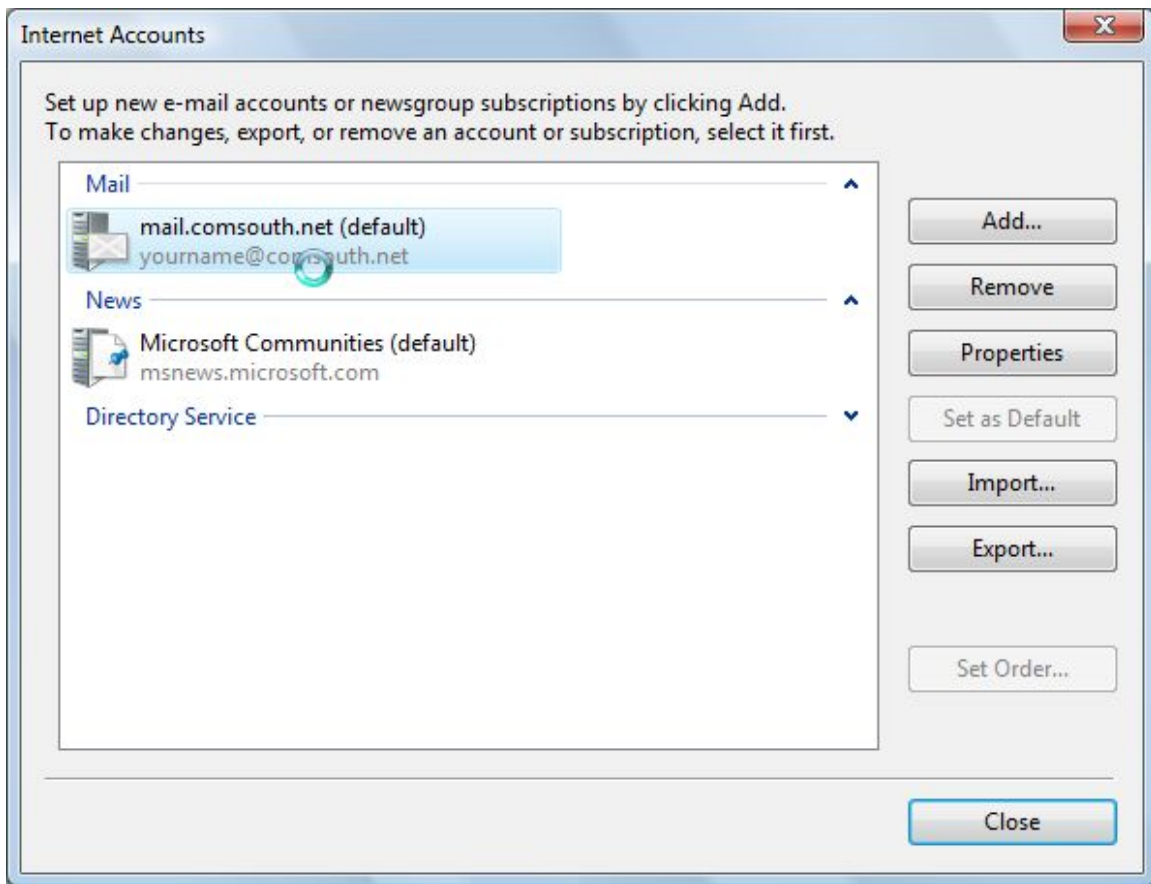
- The title "Internet Mail Logon" in blue text.
- A instruction: "Type the account name and password your Internet service provider has given you."
- An "E-mail username:" label followed by a text input field containing "yourname@comsouth.net".
- A "Password:" label followed by a password input field with five black dots.
- A checked checkbox labeled "Remember password".
- A small green circular icon in the bottom right corner of the main area.
- At the bottom right, there are two buttons: "Next" (highlighted in blue) and "Cancel".

After the E-mail user name make sure you have @comsouth.net

Type in your password and check the box to remember, click next

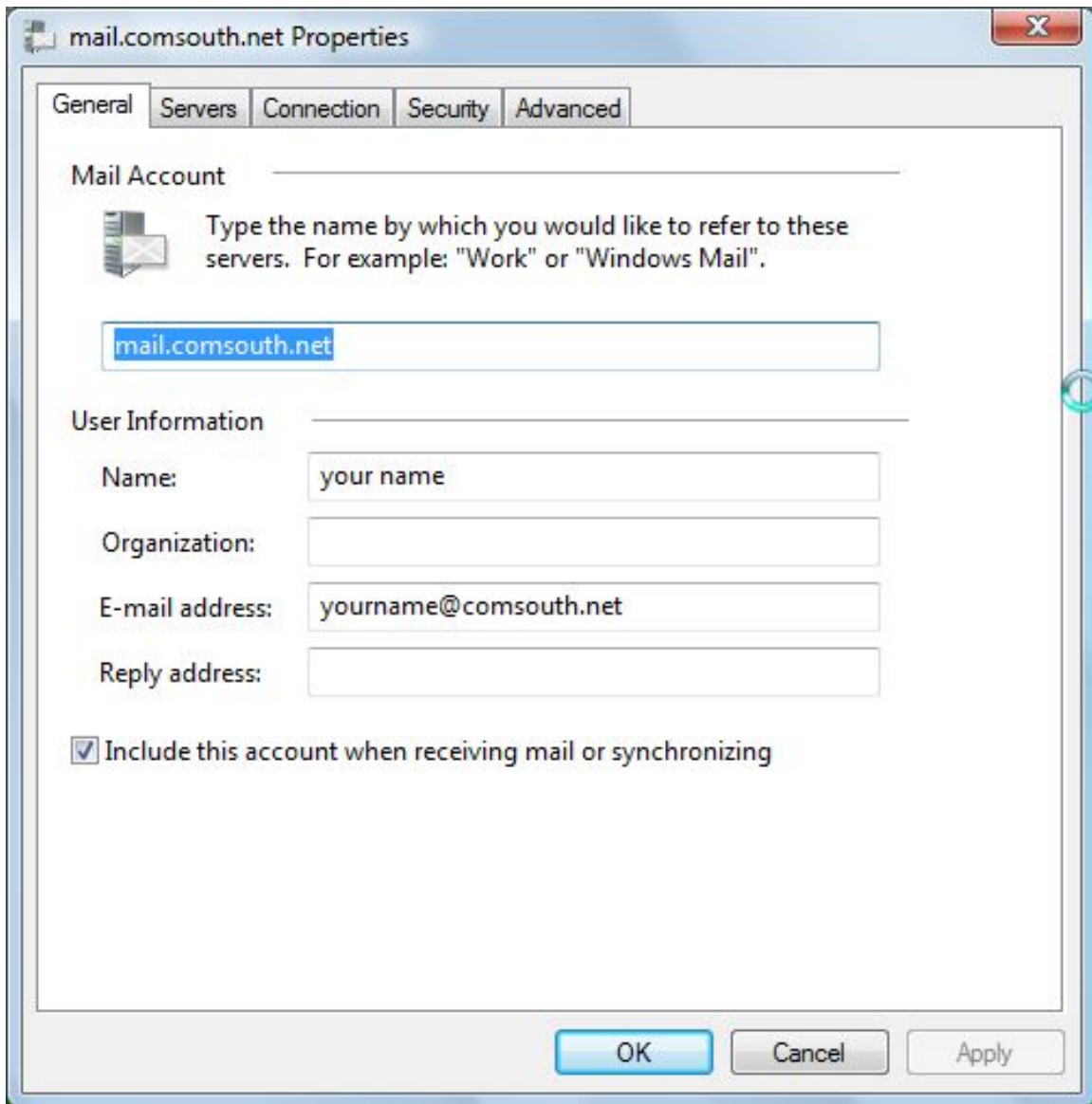


Click on Finish



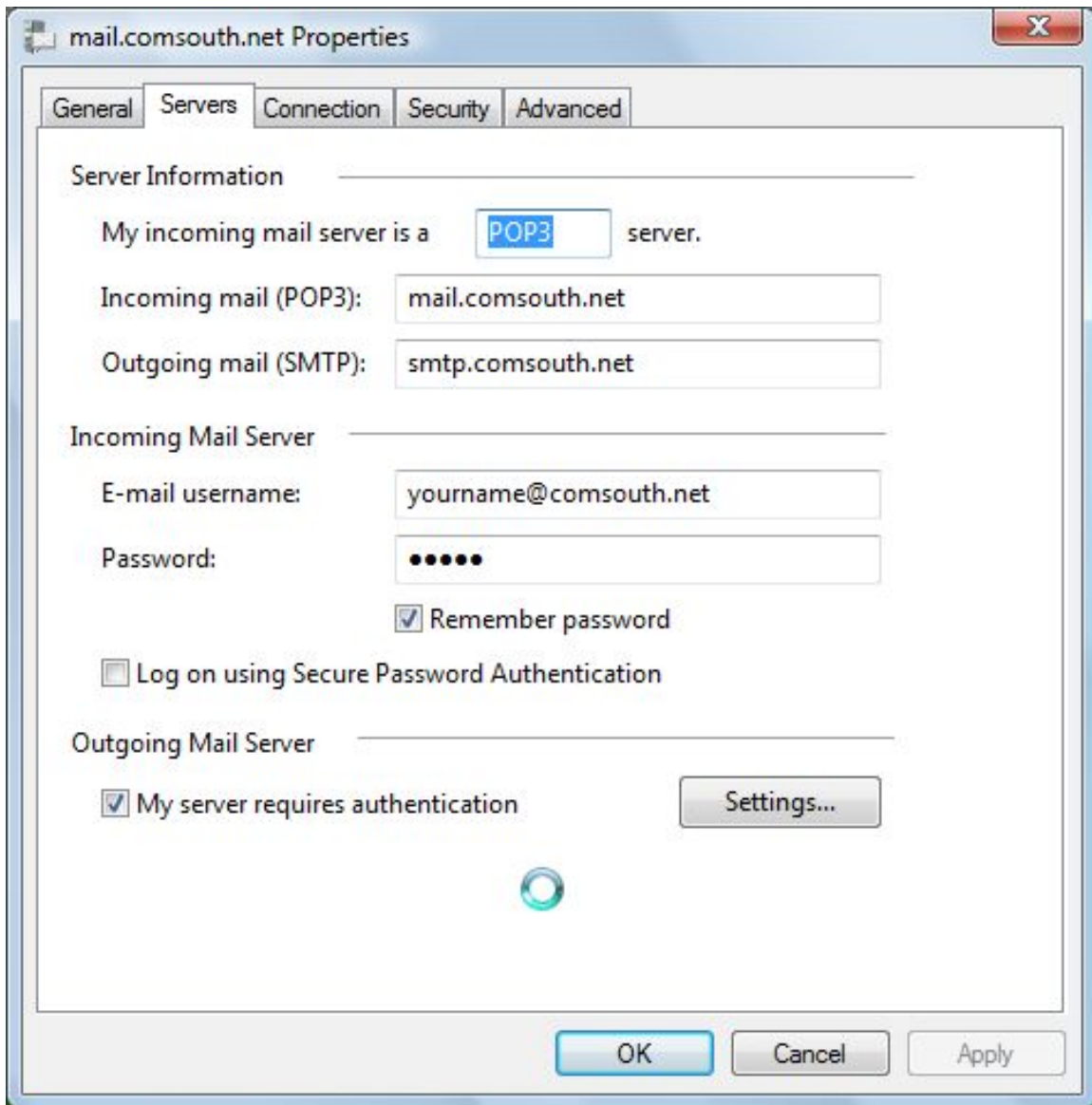
With an @comsouth.net configured here is where you will make the changes

Check the Mail account, click on properties



Add the @comsouth.net to the end of your E-Mail address

Click on the Servers Tab



Make sure the server is POP3

Incoming (POP3) : mail.comsouth.net

Outgoing (SMTP) : smtp.comsouth.net

E-Mail Username: end with @comsouth.net

Make sure the box is checked "My server requires authentication"

Click on Apply and OK to close out.